

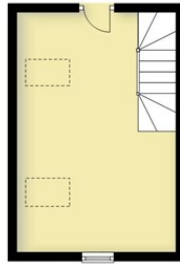
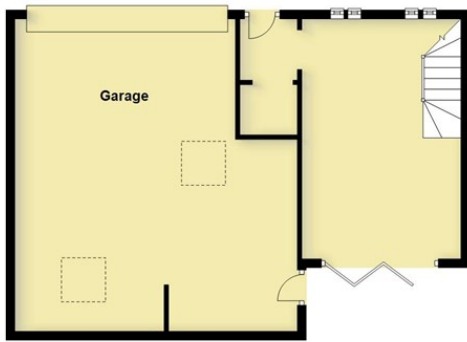


4 Bed
Cottage
located in Saltisford

Guide Price £700,000




MARGETTS
ESTABLISHED 1806



Ground Floor

Approx. 101.0 sq. metres (1087.6 sq. feet)

Total area: approx. 208.3 sq. metres (2242.2 sq. feet)

This plan is for illustration purposes only and should not be relied upon as a statement of fact

Total floor area excludes Garage and Coach House



First Floor

Approx. 72.0 sq. metres (775.5 sq. feet)



Second Floor

Approx. 17.2 sq. metres (185.5 sq. feet)

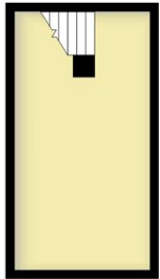


Bedroom
3.84m x 3.82m
(12'7" x 12'6")



Basement

Approx. 18.0 sq. metres (193.6 sq. feet)



Energy Efficiency Rating		
	Current	Potential
Very energy efficient - lower running costs		
(92 plus) A		
(81-91) B		
(69-80) C		
(55-68) D		
(39-54) E		
(21-38) F		
(1-20) G		
Not energy efficient - higher running costs		
England & Wales EU Directive 2002/91/EC		

DIRECTIONS

CONTACT

12 High Street
Warwick
Warwickshire
CV34 4AP

E: sales@margetts.co.uk
T: 01926 496262
www.margetts.co.uk

